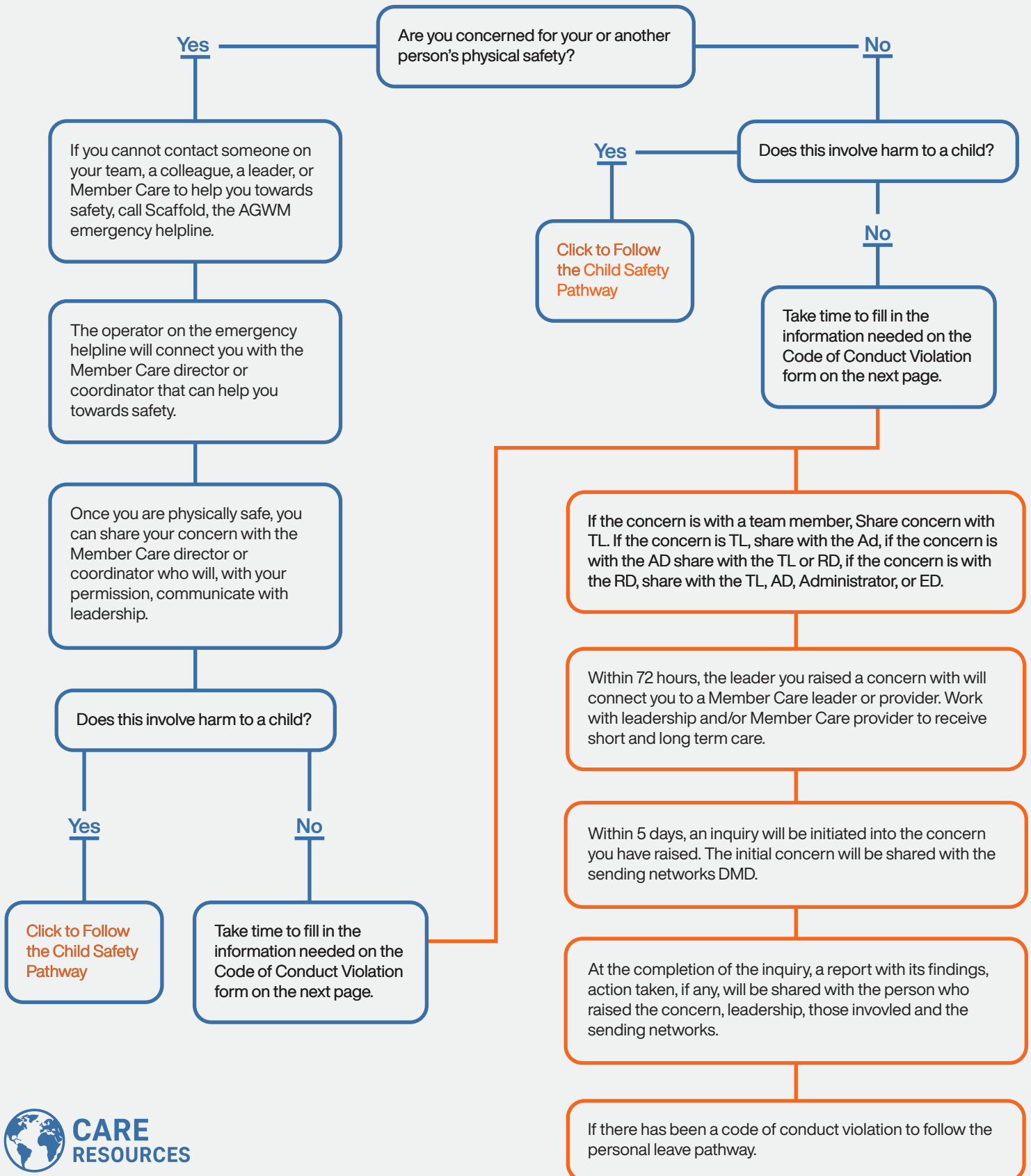


Inappropriate Conduct: Raising a Concern and Care

You or someone you care about is experiencing or knows of inappropriate conduct ([click to see code of conduct](#)) by a AGWM missionary and the inappropriate conduct does not fit the definition of misuse of spiritual authority.



Be ready to share as much of the following information as possible:

Reporting Person's Name: _____

Reporting for Self or Other: _____

Relationship to person: _____

Did the other person give permission to report: Yes/No

Provide specific, factual information:

What happened – Describe the actions or behaviors.

When it happened – Include dates and timeframes.

Where it occurred – Physical setting or online context.

Who was involved – Names and roles of people present.

Actions Taken, if any:

Type of Misconduct Observed

Indicate what applies:

- Discrimination
- Harassment
- Violence
- Physical or Verbal Abuse
- Attitude Problems
- Substance use
- Health and Safety violations
- Violations of AGWM Policy
- Sexual Misconduct/ Deviancy
- Misuse of funds, theft, fraud, or other dishonest behavior
- Other Unethical, immoral, or illegal behavior
- Harm of a child

This is not meant to be an exhaustive list of actions or inactions that constitute inappropriate conduct and is only a list of representative of such actions or inactions.